

Home EDUCATOR DAY

- Suggested activities

ENRICHMENT MATCHING:

Match the photo to the type enrichment:



Cognitive

A brain task or puzzle



Food

Presentation

Varying the way we present their food to them



Social

Would the animal usually live in a group or be solitary?



Environmental

Items within their habitat e.g. water to swim in or podiums to climb



Sensory

Any enrichment linked to one (or more) of the 5 senses

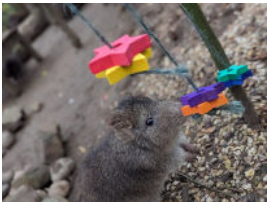
Home EDUCATOR DAY

- Suggested activities

ENRICHMENT DESIGN:

While visiting the zoo, try to spot the different enrichment we have here. Enrichment is what we use to help mentally and physically stimulate our animals. There are five types of enrichment, they are: cognitive, food presentation, social, environmental and sensory.

Here are some examples of what they might look like:



Research and learn about one of our animals during your visit to Dartmoor Zoo to help you decide which type of enrichment would work well for this animal. At home, create a design criteria before planning, creating and evaluating your enrichment creation!

Questions to consider:

Which animal is it for? What materials will be used? What kind of enrichment will it be? For example: sensory, cognitive? A mixture? Will it contain food? How will you make sure it is safe?



Using what you have learnt about enrichment while at Dartmoor Zoo, make links to how you could use enrichment for your own pet. As above, create a design criteria for this enrichment before planning, creating and evaluating your design.

We would absolutely love to see any work completed after and inspired by our Home Educator day - please feel free to send any work to: education@dartmoorzoo.co.uk if you would like us to see it

Home EDUCATOR DAY

- Suggested activities

ENRICHMENT SAFETY AND IMPORTANCE:

Enrichment is what we use to help mentally and physically stimulate our animals. There are five types of enrichment, they are: cognitive, food presentation, social, environmental and sensory. However, there are many considerations and choices for our keepers to make before they can create or use any enrichment with our animals. Using your own research and what you learn during your day at the zoo, write your answers to the following questions. You could also use these answers to create a persuasive letter or argument outlining the importance of enrichment!

Questions:

- Why do we use enrichment? What are the benefits?
- List some natural behaviours the use of enrichment might stimulate and explain why this is important for animals in captivity.
- What safety considerations need to be taken into account when creating and giving enrichment to our animals? Could we give the same enrichment to our tiger as we give to our meerkats?
- Explain why it is important that we don't use the same enrichment or enrichment type repeatedly with an animal.
- What are the consequences of not providing enrichment?



We would absolutely love to see any work completed after and inspired by our Home Educator day - please feel free to send any work to: education@dartmoorzoo.co.uk if you would like us to see it