

Home EDUCATOR DAY

- Suggested activities

IMPORTANT RESEARCH EQUIPMENT:

Match the photo to the description:



Camera Traps

These can be used to record videos of our animals, even when researchers are not present. This is particularly useful for nocturnal animal behaviour.



Sound level meter

These are used to record how loud an area is in decibels. They are used particularly when we want to understand how noise impacts our animals' behaviour and welfare.



Zoomonitor

An app which allows you to collect data on, for example, animal behaviour and enclosure space usage.



Weighing scales

Whether its weighing out animal feed or faecal samples (poo!), a set of scales is important for measuring various substances for data collection.

Home EDUCATOR DAY

- Suggested activities

THE IMPORTANCE OF RESEARCH IN ZOOS:

Modern zoos strive to conduct **research** into the natural world in order to **educate** others on how to **conserve** the many and important ecosystems. This starts with research. Observing patterns in animal behaviour and activity is important to evaluate welfare within zoos and wildlife parks. With an initial observation or question we can collect data, evaluate this and come to a conclusion regarding many variables and their impact on our animals.

Using your own research and what you learn during your day at the zoo, write your answers to the following questions. You could also use these answers to create an informative letter outlining the importance of research in zoos!

Questions:

- Number the following scrambled steps to create the correct series of events for conducting a research project:

Design an
experiment

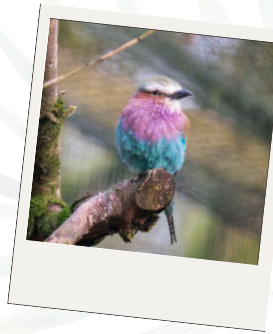
Evaluate your
data

Come up with
a question

Conclude findings

Collect Data

- Why is it important for zoos to share their research with others? What impact does this have on animal welfare?
- True or false: to be able to have a licence to run a zoo, you have to actively contribute to animal research efforts.



We would **absolutely love to see any work completed after and inspired by our Home Educator day** - please feel free to send any work to: education@dartmoorzoo.co.uk if you would like us to see it

Home EDUCATOR DAY

- Suggested activities

BECOME A RESEARCHER FOR THE DAY

It is now your turn to become a researcher for the day!

Our research team use ethograms to understand our animals' behaviour.

There is an example of an ethogram below.

Choose an animal to focus on and go to their enclosure. Set a timer for 10 minutes and place a tally in the correct box when you see the behaviour.

If you feel confident enough, you could also note down the time they start and finish performing each behaviour so you can calculate how long they do each behaviour for.

CHOSEN ANIMAL:

.....

Resting (alert)	Resting (not alert)	Out of sight	Eating/ drinking	Vocalising	Social behaviour	Walking or running	Other

Using your data:

Take your data home with you and use it to create a graph. Make sure you do your research to ensure your graph choice is suitable for your data.

BONUS: Turn your data in to fractions or percentages to communicate the proportion of the 5 minutes spent performing each behaviour.

Things to consider...



Hopefully the animal you chose was active during your daytime visit. How could we collect data if our chosen animal is nocturnal?

BONUS - Do you think the presence of humans could impact the animals' behaviour when we collect data? How could we avoid this?

We would absolutely love to see any work completed after and inspired by our Home Educator day - please feel free to send any work to: education@dartmoorzoo.co.uk if you would like us to see it